



Community Meeting Windermere HS Stadium

August 23, 2023



Please sign in on your mobile device:
<https://communitymeeting.ocps.net/>



Windermere HS Stadium Meeting Agenda

August 23, 2023, 6:00 PM

- Welcome – School Board Member Pam Gould
- Introductions – Andy Orrell, OCPS Communications
- Project Update:
 - OCPS Facilities: Jad Brewer
 - Architect: Patrick Rauch, AIA **SCHENKELSHULTZ**
■■■■ ARCHITECTURE ■■■■
 - Lighting Designer: Bob DeCouto, MUSCO Lighting
- Questions and Answers
- Adjournment



Welcome Message

From District 4 School Board Member

Pam Gould



History

2006

- OCPS completes acquisition of high school property

2015

- OCPS & County reach settlement agreement which establishes that the football stadium will be located at Deputy Scott Pine Community Park

2017/18

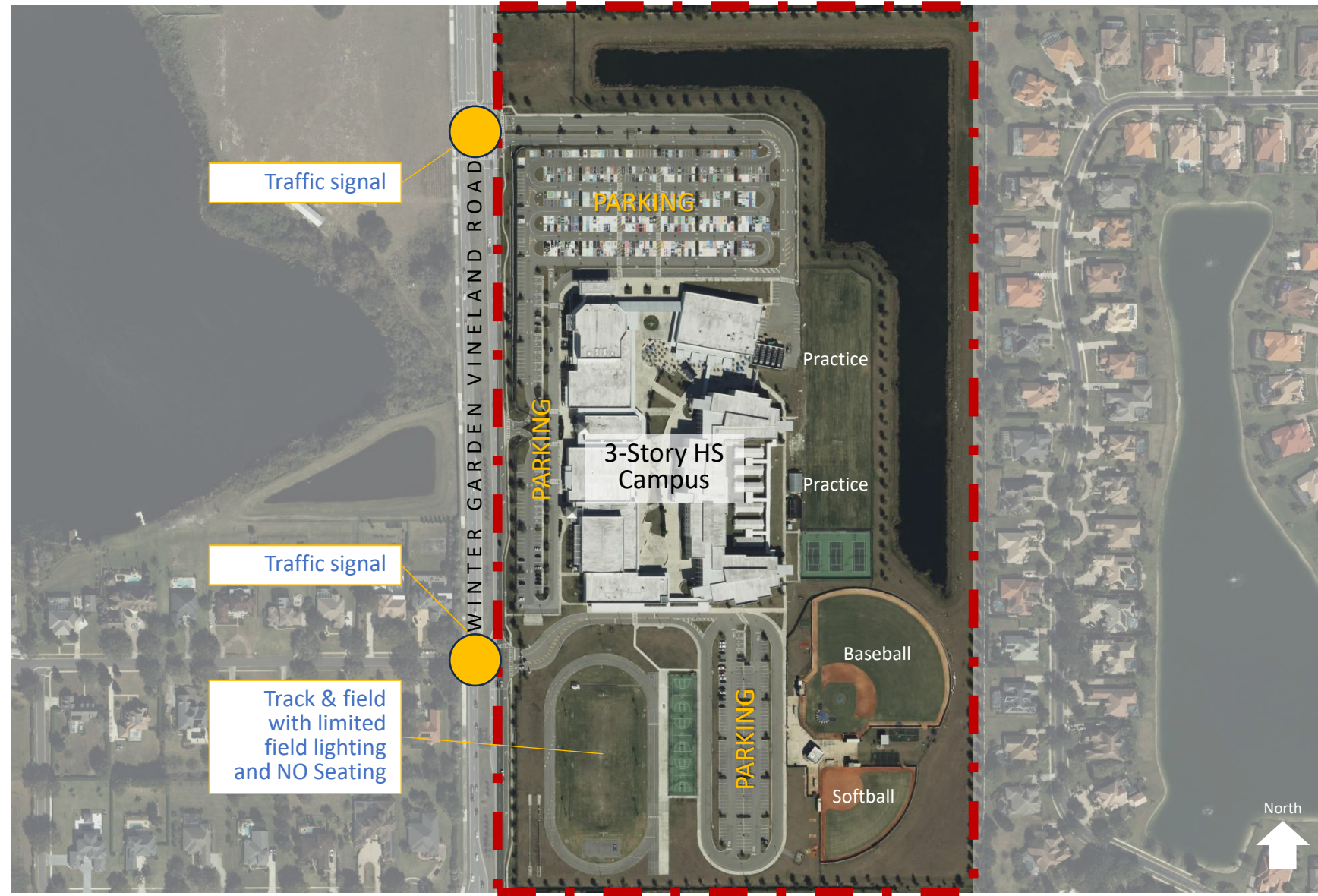
- New Windermere High School and Deputy Scott Pine Community Park open with all football games played at Deputy Scott Pine Community Park



Current Situation

Windermere HS

- Track and field with limited/minimal field lighting (40' tall poles) and NO seating.
- 860 on-site paved parking spaces
- Traffic signals at two main vehicular entry points



Current Situation

Deputy Scott Pine Community Park

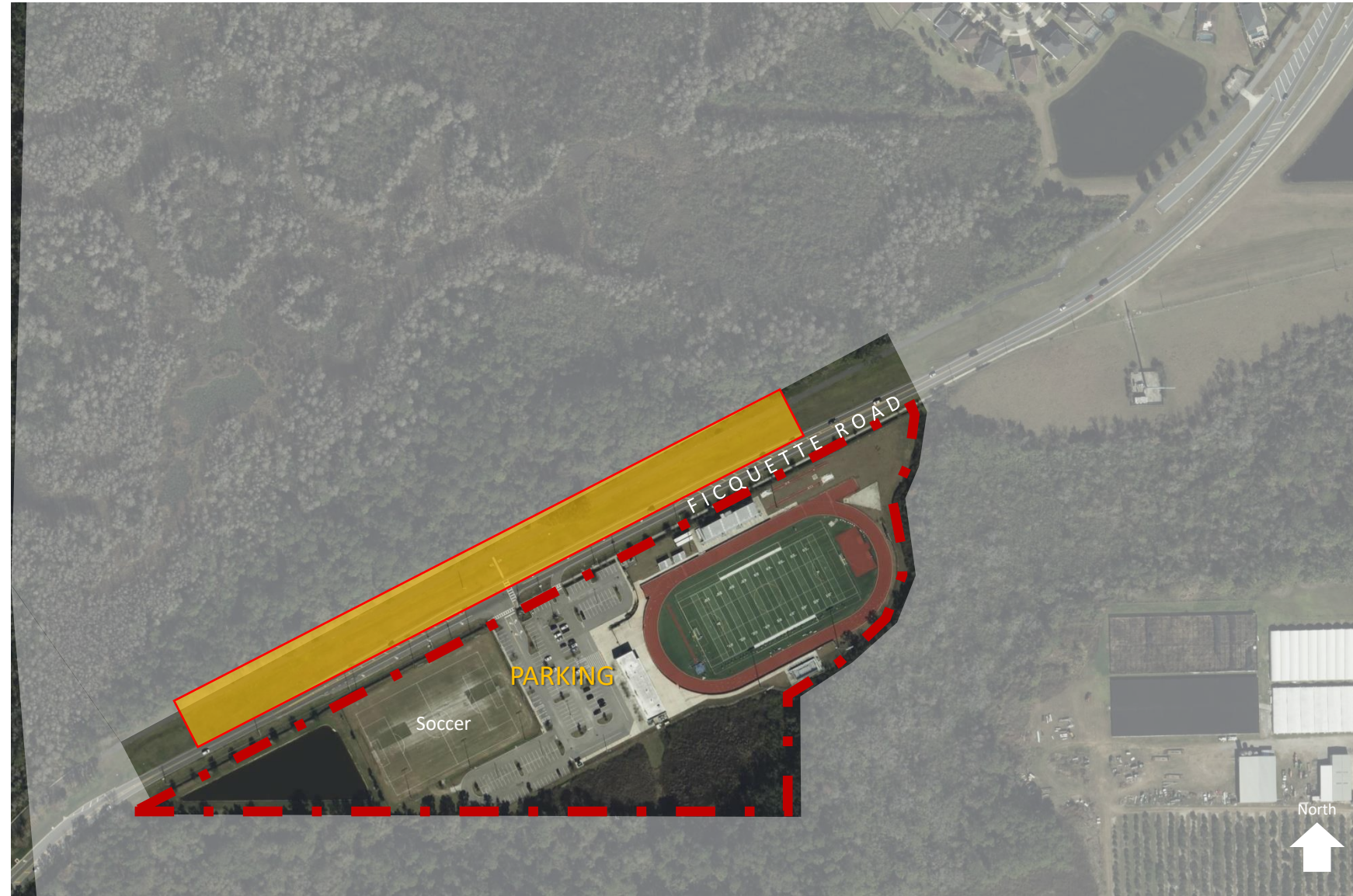
- Competition track and field with:
 - Full sports field lighting (80' poles)
 - 1,320 stadium seating and announcer's booth
 - Field house building with locker rooms, restrooms, and concessions
- 205 on-site paved parking spaces
- Parking lot entrance is not signalized



- Track and field
- Full sports field lighting
 - 1,320 seat stadium & announcer's booth
 - Field house building with locker rooms, restrooms and concessions

Challenges with the Current Situation

- Nowhere on site for public/spectators to shelter during a storm/lightning event
- Traffic congestion
- Typical parking demand for events exceeds the available parking. Overflow parking on soccer field damages turf
- Spectators use area across the street for overflow parking and drop off creating a safety issue
- Parking in surrounding neighborhoods



Proposed Windermere High School Stadium Project

Proposed Plan

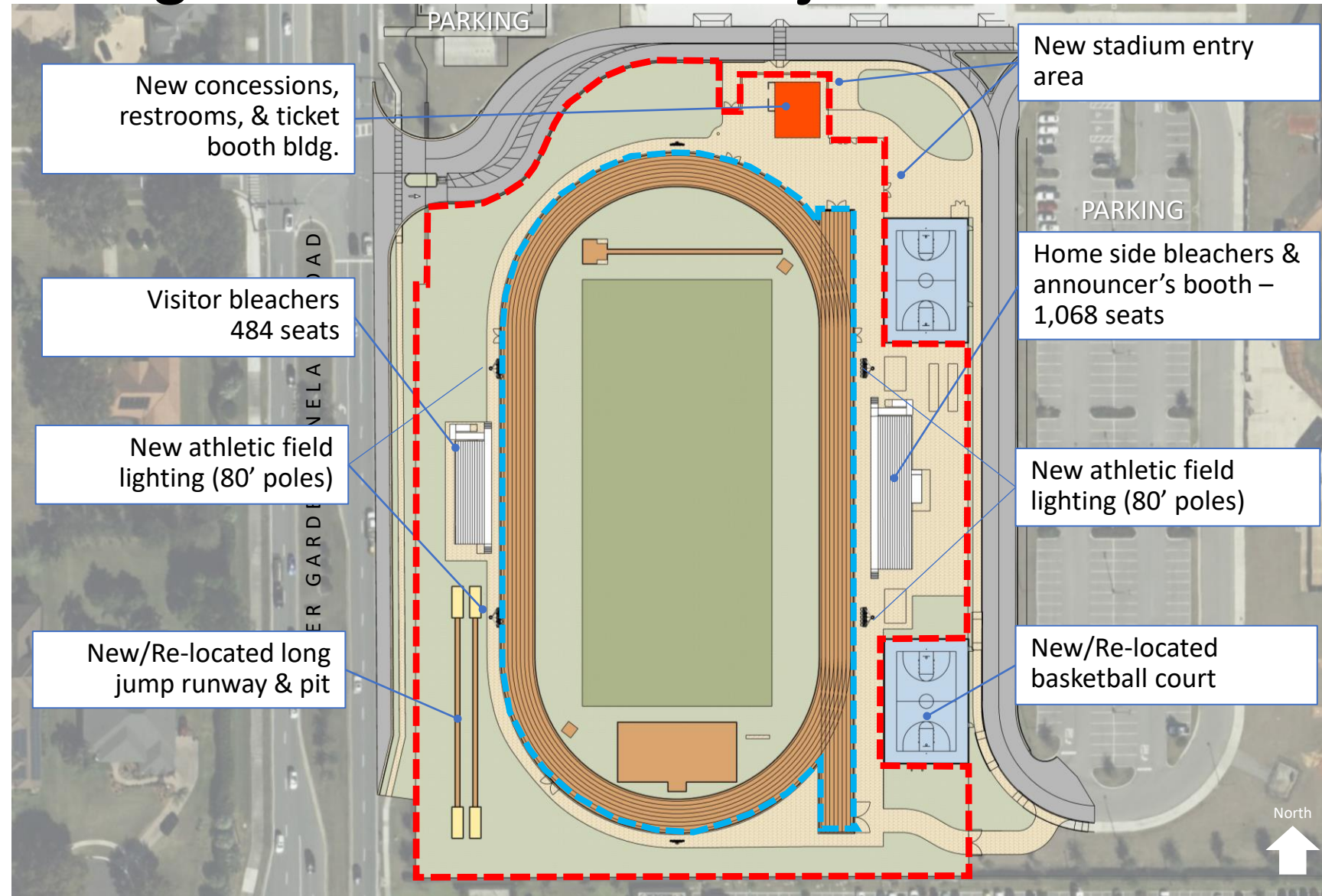
- Replace field lighting with full athletic field lighting package (80' poles)
- Construct a new restroom, concessions, and ticket booth building at north end of track
- Install stadium seating 1,552 total seats including:
 - 1,068 seats home side (east)
 - 484 seats visitor side (west)
 - Potential for 300 future/expansion seats



Proposed Windermere High School Stadium Project

Proposed Plan

- Replace field lighting with full athletic field lighting package (80' poles)
- Construct a new restroom, concessions, & ticket booth building at north end of track
- Install stadium seating 1,552
Total seats Including:
 - 1,068 Seats home side (east)
 - 484 Seats visitor side (west)
 - Potential for 300 future/expansion seats



Proposed Windermere High School Stadium Project

Improvements vs. the Current Situation

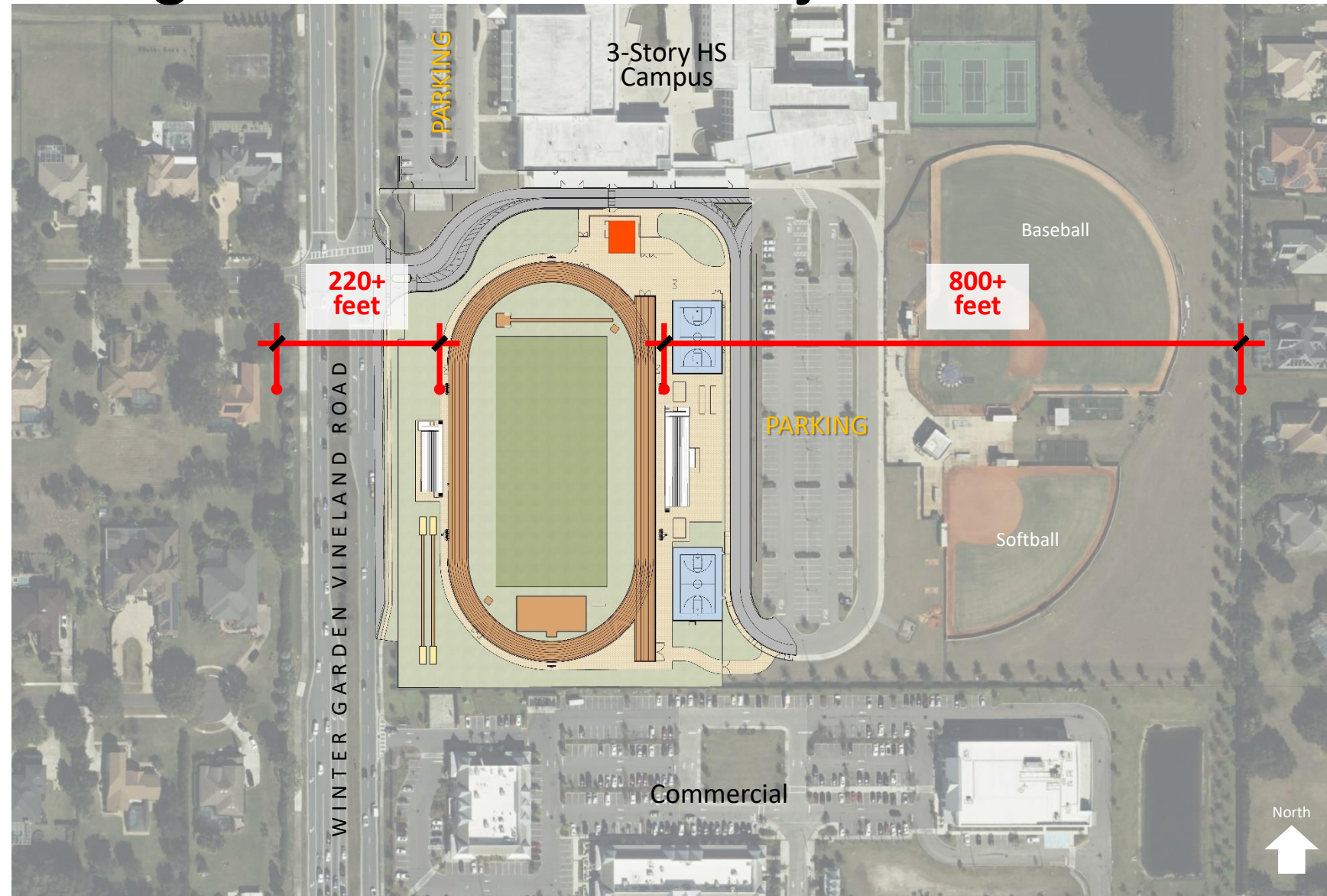
- Adjacent campus buildings provide area for shelter in case of storm/ lighting event
- 860 paved parking spaces on-site to handle the typical attendance for an event
- Spectators will not have to cross Winter Garden Vineland Road to access stadium
- Signalized vehicular entrances provide safer traffic control



Proposed Windermere High School Stadium Project

Field Lighting

- Lighting buffers will eliminate:
 - Light spillage to adjacent properties
 - Visible glare to adjacent properties
- Lighting will comply with the Orange County Lighting Ordinance
 - Less than one footcandle at the HS property line
 - Less than 1% light above horizontal





THE PREMIER SPORTS LIGHTING EXPERTS

Sports Lighting Since 1976

600+

Field lighting
projects in Florida
since 2016

40,000+

LED fixtures in
Florida since 2016

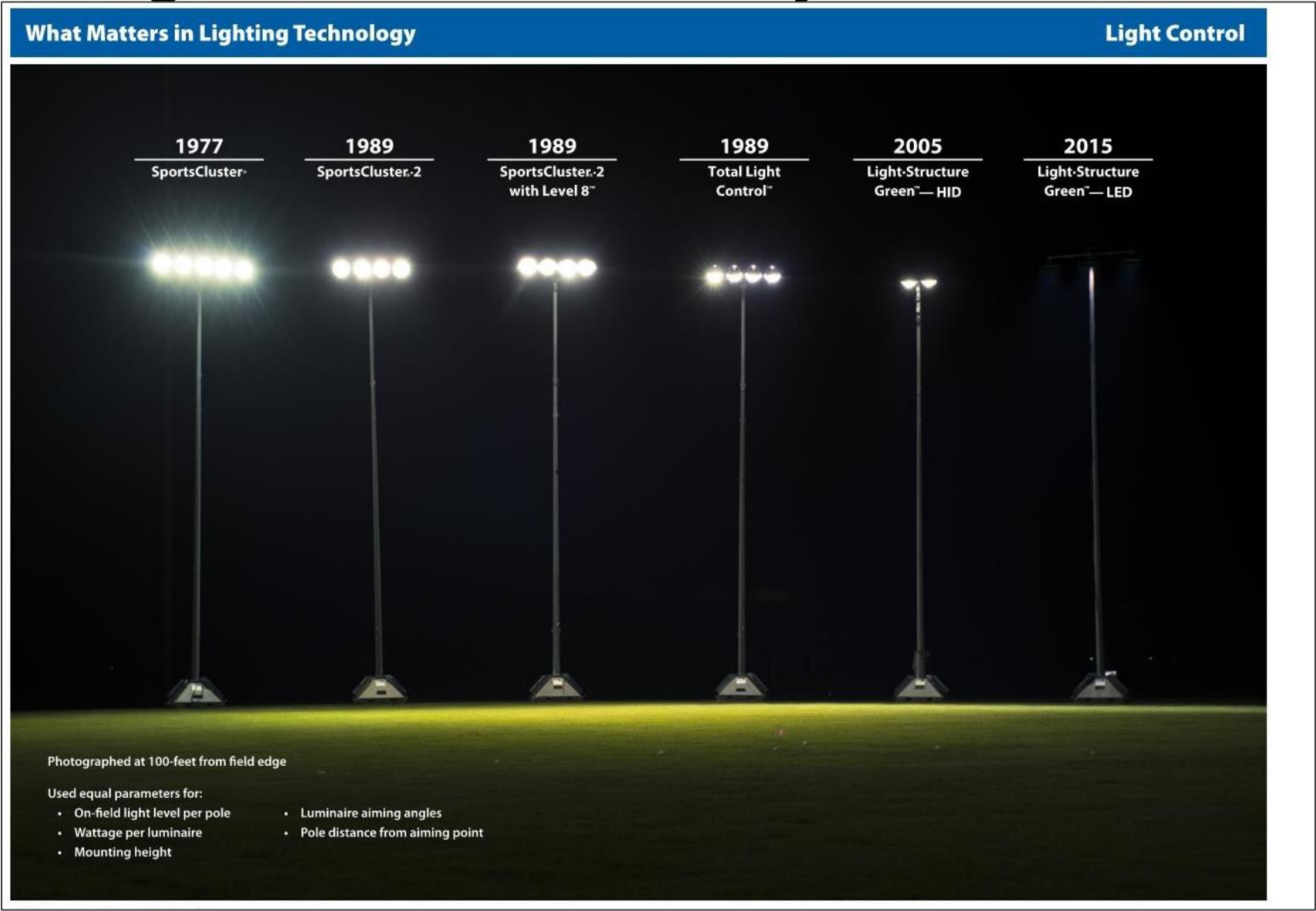


Windermere High School Stadium

Proposed Windermere High School Stadium Project

Field Lighting

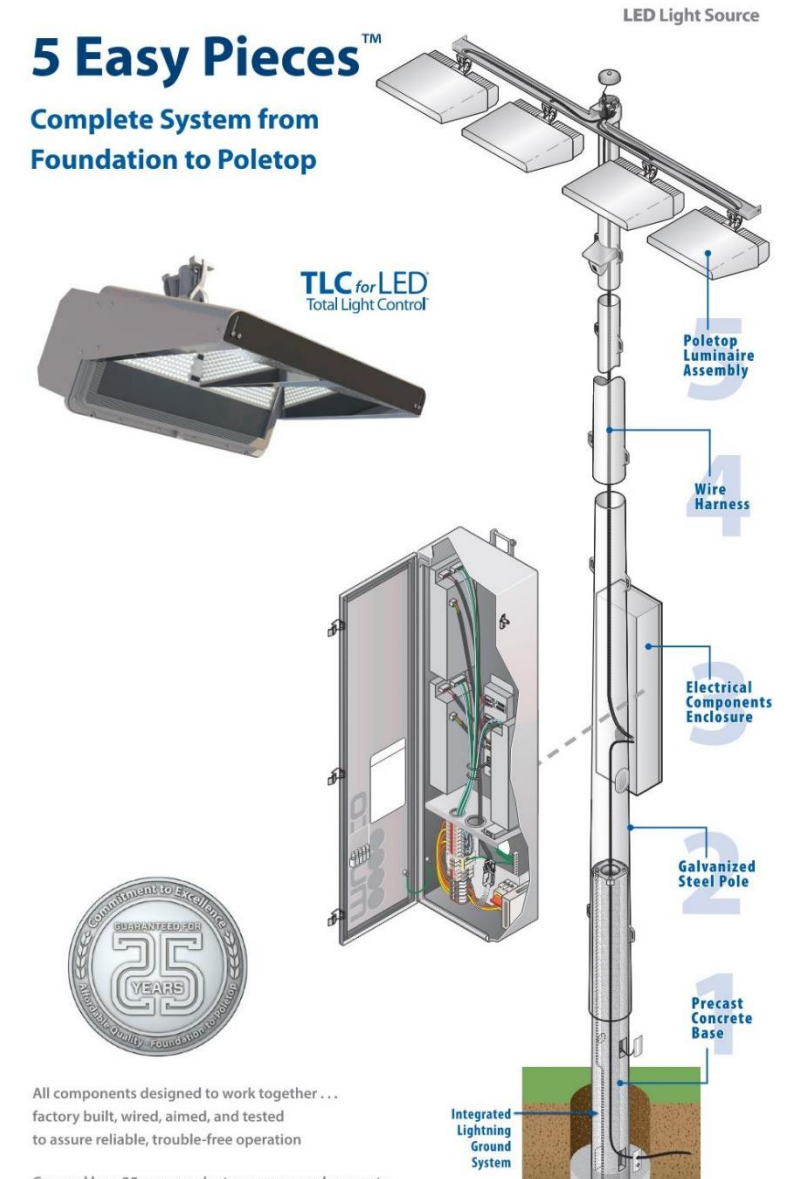
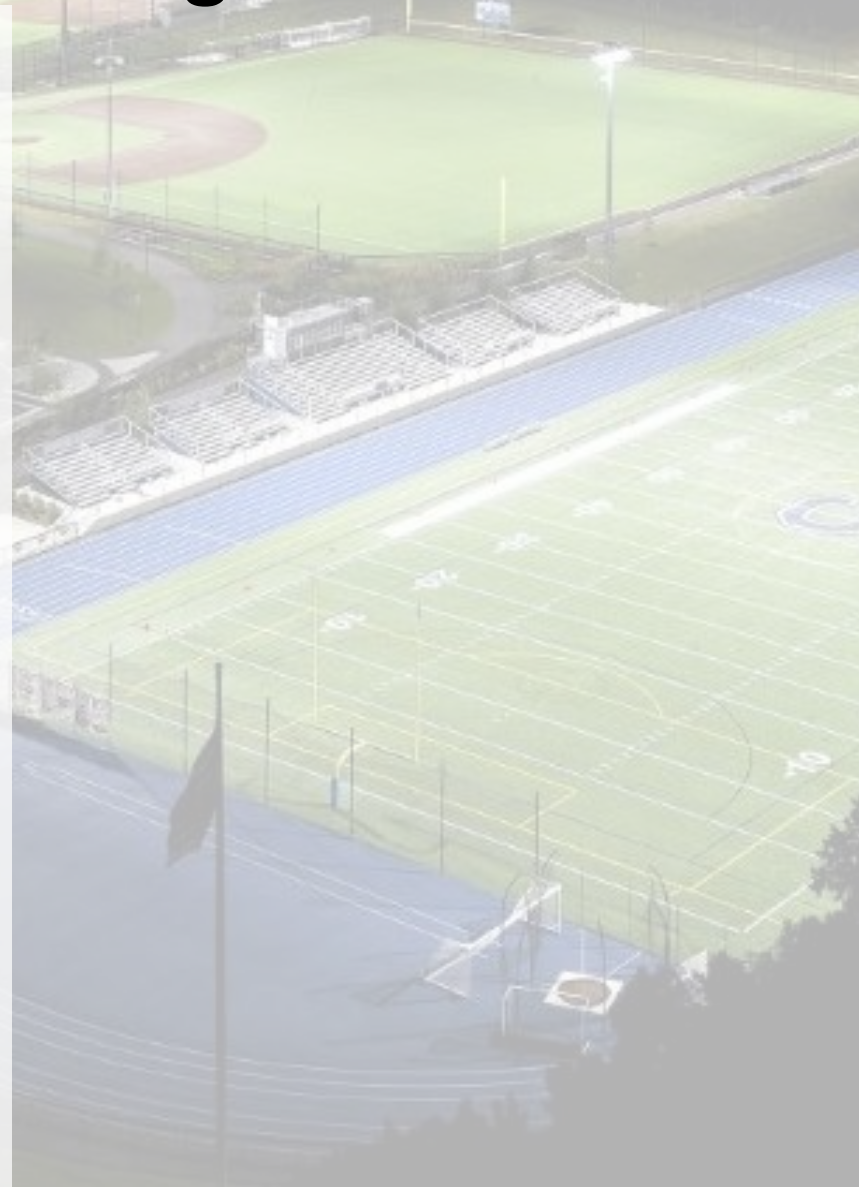
The Evolution of Glare Control



Proposed Windermere High School Stadium Project

Field Lighting

- New sports field lighting will be energy efficient LED
- Meet high school standards for sports field lighting
- Lighting will eliminate glare to surrounding neighbors
- Sports lighting will meet the International Dark Sky Assoc. (IDA) Community Friendly Sports Lighting Program



Proposed Windermere High School Stadium Project

Field Lighting

The Results

- Lighting design meets the Orange County ordinance for light spillage
- Lighting design will eliminate glare to the neighborhoods surrounding the site
- Sports Lighting will meet the International Dark Sky Assoc. (IDA) Community Friendly Sports Lighting Program

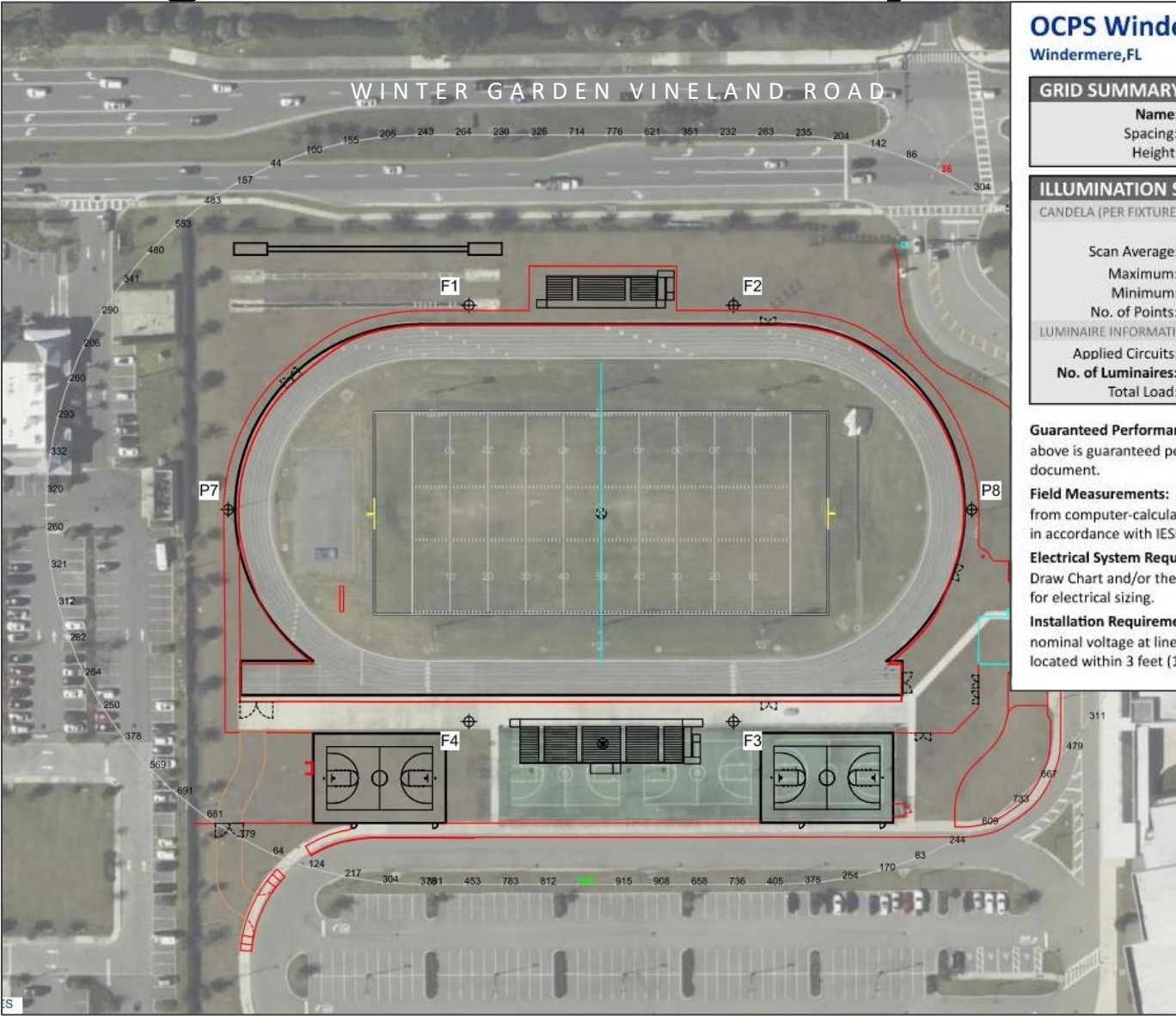


Proposed Windermere High School Stadium Project

Field Lighting

Windermere HS Photometrics

- International Dark Sky Assoc. (IDA) requires less than 1,000 candela at 150' surround the field
- Proposed lighting meets the criteria



OCPS Windermere HS Football Windermere, FL

GRID SUMMARY	
Name:	Spill 150ft Offset
Spacing:	30.0'
Height:	3.0' above grade

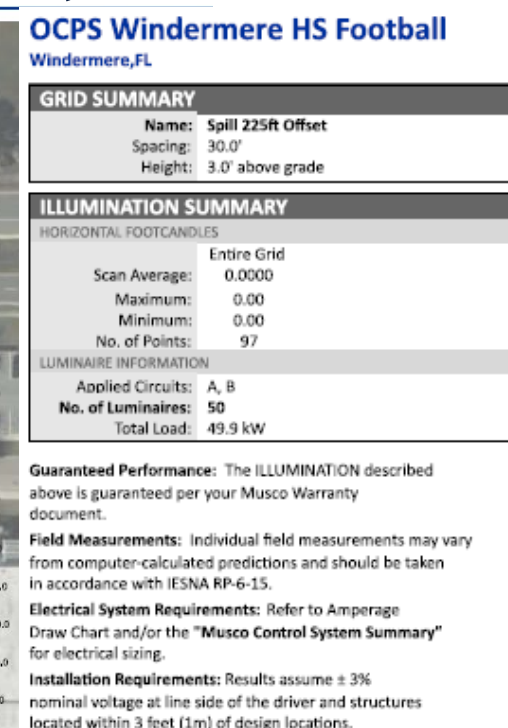
ILLUMINATION SUMMARY	
CANDELA (PER FIXTURE)	
Scan Average:	Entire Grid 375.3376
Maximum:	951.68
Minimum:	35.79
No. of Points:	82
LUMINAIRE INFORMATION	
Applied Circuits:	A, B, C
No. of Luminaires:	50
Total Load:	49.9 kW

Guaranteed Performance: The ILLUMINATION described above is guaranteed per your Musco Warranty document.

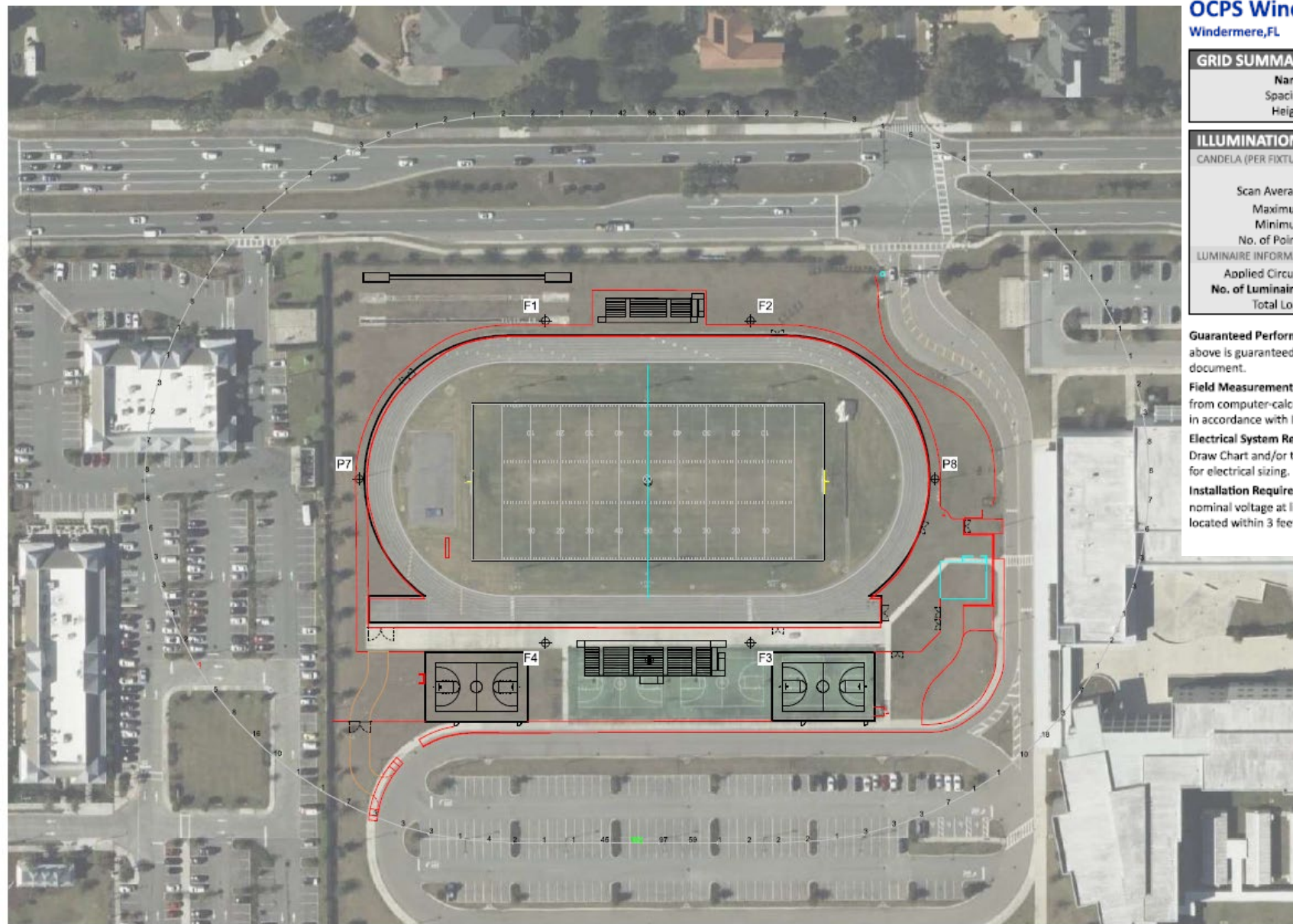
Field Measurements: Individual field measurements may vary from computer-calculated predictions and should be taken in accordance with IESNA RP-6-15.

Electrical System Requirements: Refer to Amperage Draw Chart and/or the "Musco Control System Summary" for electrical sizing.

Installation Requirements: Results assume $\pm 3\%$ nominal voltage at line side of the driver and structures located within 3 feet (1m) of design locations.



Pole location(s) \oplus dimensions are relative to 0.0 reference point(s) \otimes



GRID SUMMARY	
Name:	Spill 225ft Offset
Spacing:	30.0'
Height:	3.0' above grade
ILLUMINATION SUMMARY	
CANDELA (PER FIXTURE)	
	Entire Grid
Scan Average:	8.0094
Maximum:	101.82
Minimum:	0.51
No. of Points:	97
LUMINAIRE INFORMATION	
Applied Circuits:	A, B
No. of Luminaires:	50
Total Load:	49.9 kW

Installation Requirements: Results assume $\pm 3\%$ nominal voltage at line side of the driver and structures located within 3 feet (1m) of design locations.

Pole location(s) \oplus dimensions are relative to 0.0 reference point(s) \otimes

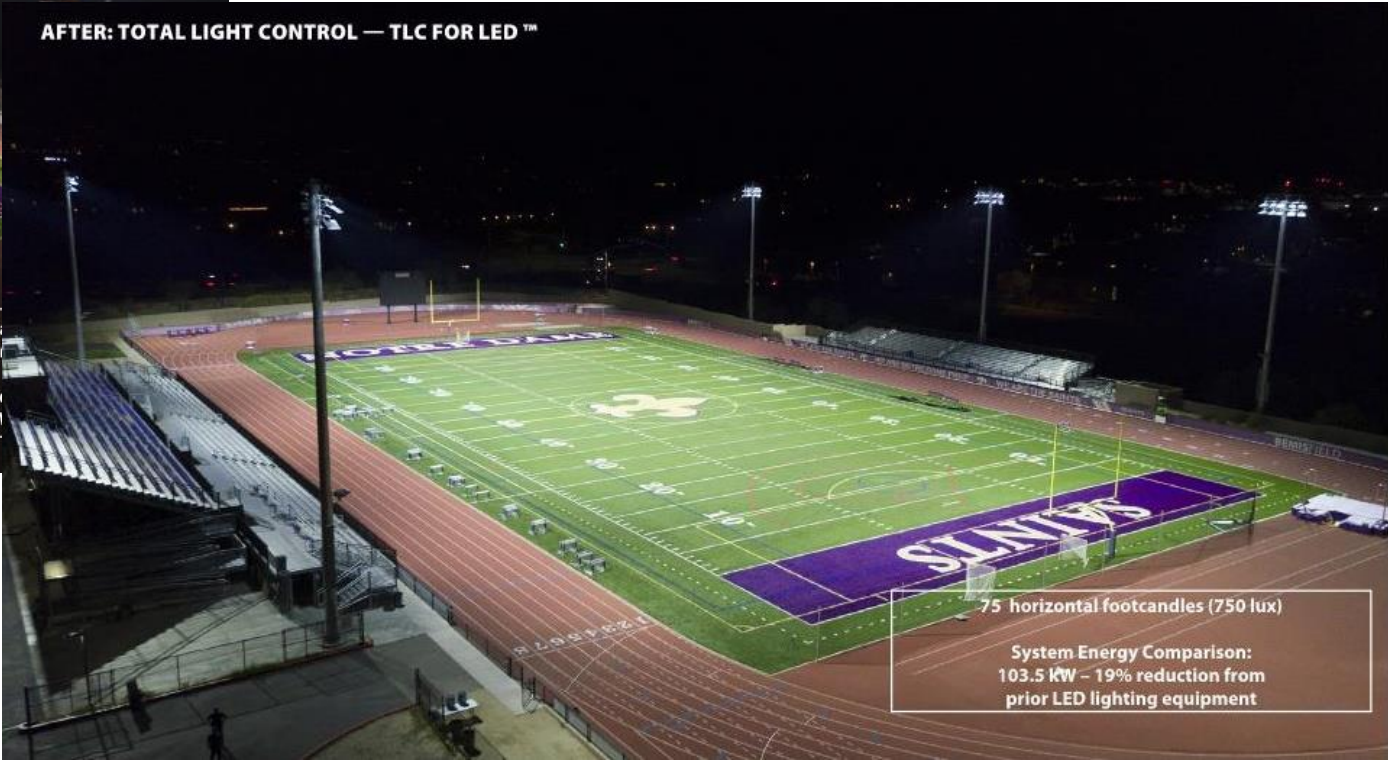
Proposed Windermere High School Stadium Project

Field Lighting

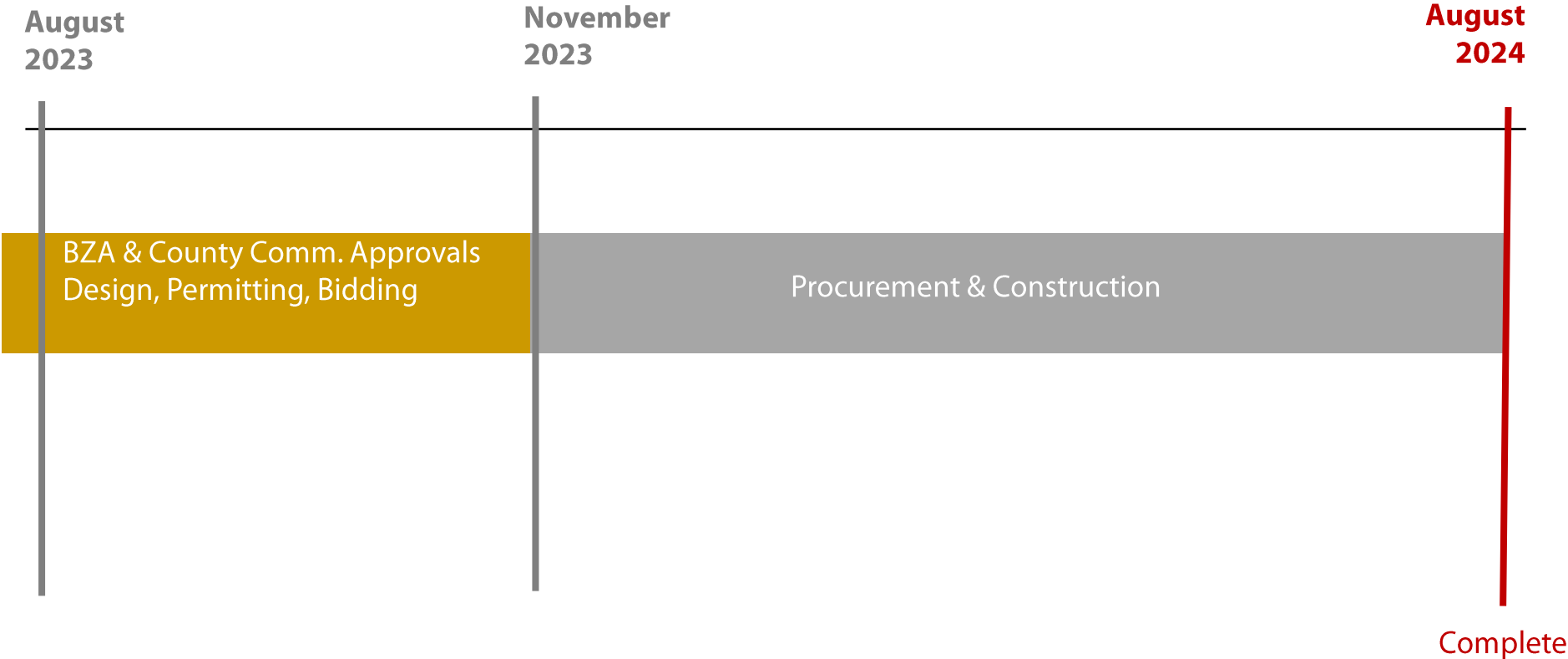
Older/Inferior Technology



With MUSCO TLC Technology



Projected Schedule



This Community Meeting Presentation is posted
at facilities.ocps.net and on the School Board Member's page.

Our Promise. Your Support. Their Success.

Our Promise. Your Support. Their Success.

Our Promise. Your Support. Their Success.

Thank You



Questions & Answers



Windermere High School Stadium

